

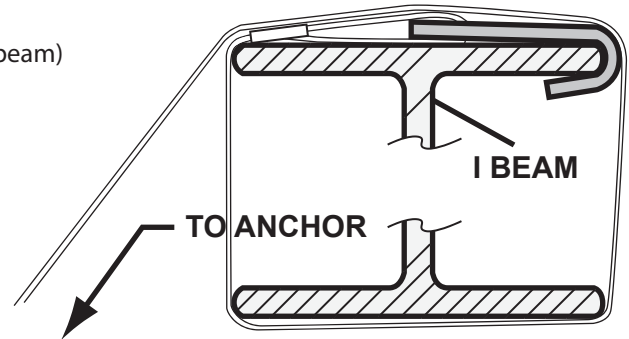
I-BEAM FRAME CONNECTORS

FRAME TIE (OTFT-1)

- STEP 1 : Attach frame clamp (hook) inside top flange of home frame.
 STEP 2: Place strap between the frame and home as shown. (wrapping I-beam)
 STEP 3: Pull strap tight and attach to the anchor tension head. (Refer to strapping page for proper installation of strap.)
- NOTE: The frame tie has an allowable working load of 3150 lbs., with no more than 2% elongation and shall withstand a 50% overload (4725 lbs. total)

OTFT-1 with factory installed strap

Enlarged End View of I-Beam Floor

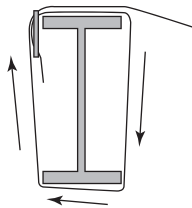


DOUBLE SLOTTED BUCKLE (OTST-1)

INSTALLATION INSTRUCTIONS



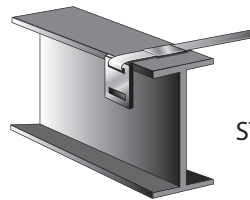
- STEP 1 : Thread frame tie strap through buckle as shown.
 STEP 2: Thread long end of strap between the frame and floor of home.
 STEP 3: Ensure proper strap tension. (Refer to strapping page for proper installation of strap.)



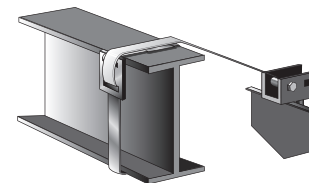
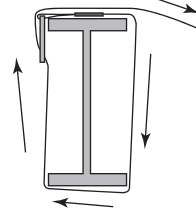
NOTE: The maximum allowable working load capacity of the strap woven through the slots in the buckle is 3150 lbs., with no more than 2% elongation and shall withstand a 50% overload (4725 lbs. total)

FACTORY CRIMPED DOUBLE SLOTTED BUCKLE (OTST-1)

INSTALLATION INSTRUCTIONS

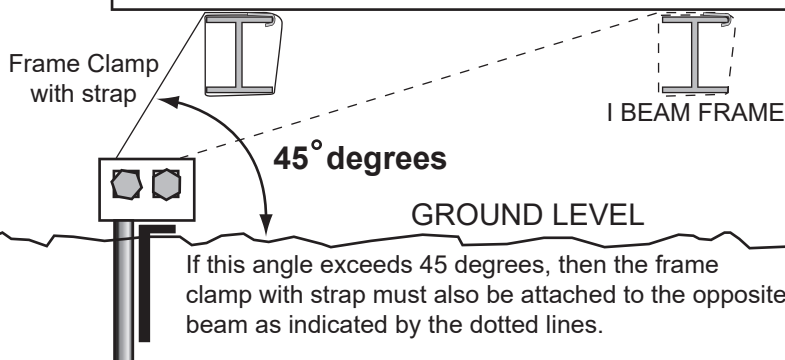


- STEP 1 : Install strap by pushing the end of the strap between the inside of the frame I-beam and the floor.
 STEP 2: Position the buckle at the upper end of the I-beam frame. Wrap the end of the strap through the slot in the buckle as shown. Push the end of the strap in between the I-beam and floor.



NOTE: The maximum allowable working load capacity of the strap woven through the slots in the buckle is 3150 lbs., with no more than 2% elongation and shall withstand a 50% overload (4725 lbs. total)

MANUFACTURED HOME



- 1) The tensioning bolt can be inserted in the head from either side.
- 2) In areas of severe cold weather where possible damage could occur from frost heave, the homeowner should be prepared to adjust tension on the straps to take up slack.